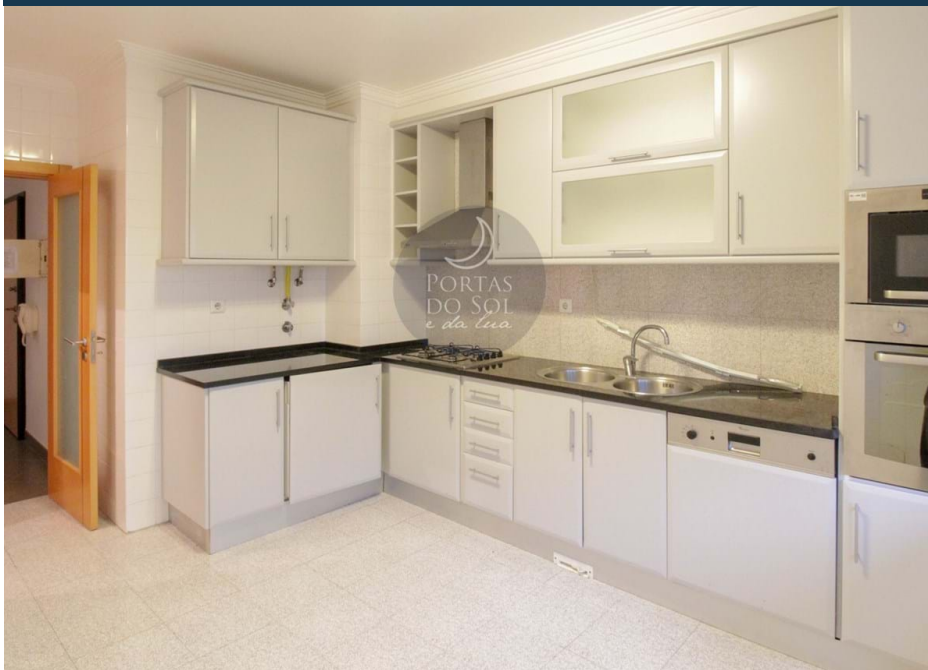




POA | Ref. 1647 | Santarém | Santarém



126 m2



126 m2



3



2



×



×

T3 with Semi-Equipped Kitchen and Stove.

3 bedroom apartment of Recent Construction with 126 m2 distributed by Semi-Equipped Kitchen with Hob, Oven, Hood, Water Heater, Microwave, Dishwasher and Washing Machine, Pantry, Common Room with Stove and Balcony, Entrance Hall and Corridor with Built-in Foci, 3 Bedrooms with Built-in Wardrobes (1 Of Them Suite) and Common Bathroom.

Located in Residential Zone Benefits from the Proximity of Hypermarket, Green Zones, Children's Park and Easy and Free Parking at the Door.

AMI: 11798 | R. João Afonso, 57 Santarém / R. do Jasmim, 1 Caldas da Rainha

TEL: | Email: geral@portasdosoledalua.pt